

2009 09 29\_0198.JPG

☰ Examples (<http://www.wolframalpha.com/examples/?src=input>) ↻ Random

Input interpretation:



(image)

[Enable interactivity](#)

Image characteristics:

[More](#)

dimensions	3008 × 2000 pixels
size	17.21 MB (megabytes)
aspect ratio	3 (width) : 2 (height)
color space	8-bit RGB

[Enable interactivity](#)

Image source information:

[More](#)

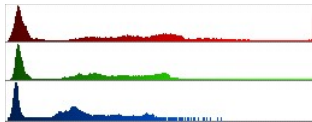
[Show raw metadata](#)

time stamp	6:57:27 pm MDT   Tuesday, September 29, 2009 (6 years ago)
model	NIKON D50
manufacturer	NIKON CORPORATION
exposure	1/125seconds

[Enable interactivity](#)

Pixel value histograms:

RGB:



[Enable interactivity](#)

Hue and saturation:



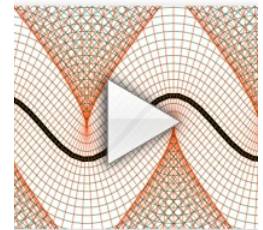
[Enable interactivity](#)

Brightness:



[Enable interactivity](#)

(<http://demonstrations.wolfram.com/NotYourAveragePlayButton>)



**Wolfram  
Demonstrations  
Project »**

Discuss Wolfram|Alpha on  
Wolfram Community »  
(<http://community.wolfram.com/content?curTag=wolfram%20alpha>)

Take Wolfram|Alpha anywhere...



(<http://products.wolframalpha.com>)



(<http://www.wolframalpha.com>)



(<http://products.wolframalpha.com>)

Image segmentation:

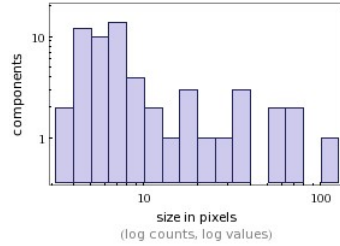
[Hide details](#) [Show outlined](#)



[Enable interactivity](#)

Component size distribution:

[Size distribution](#)



[Enable interactivity](#)

Components:

[Order by area](#) [More](#)

location	mean color	area in pixels	centroid position	bounding box
		202	(114, 32)	(0, 0) (236, 70)
		72	(149, 105)	(0, 33) (236, 132)
		111	(149, 138)	(42, 111) (236, 157)
		65	(111, 145)	(0, 105) (111, 145)
		6	(119, 127)	(115, 125) (123, 128)
		5	(86, 117)	(82, 115) (91, 119)

[Enable interactivity](#)

Image keypoints:

[Hide details](#)

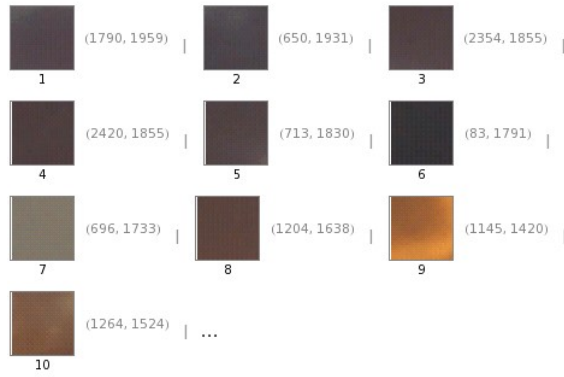


(20 keypoints)

[Enable interactivity](#)

Keypoint neighborhoods:

[Hide coordinates](#) [Less](#) [More](#)



[Enable interactivity](#)

Borders removed:



(new dimensions: 3008 × 1858 pixels)

[Enable interactivity](#)

Level adjustment:

[Decrease](#) [Brightness ▼](#) [Increase](#)

less                      unchanged                      more



(contrast: +0.0 brightness: +0.2 gamma: 1.0)

[Enable interactivity](#)

Color adjustment:

[Decrease](#) [Red ▼](#) [Increase](#)

less                      unchanged                      more

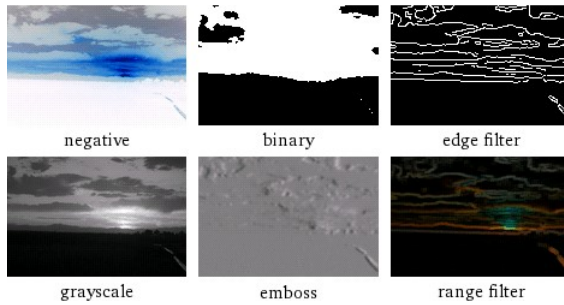


(red: +0.1 green: +0.0 blue: +0.0)

[Enable interactivity](#)

Image transformations:

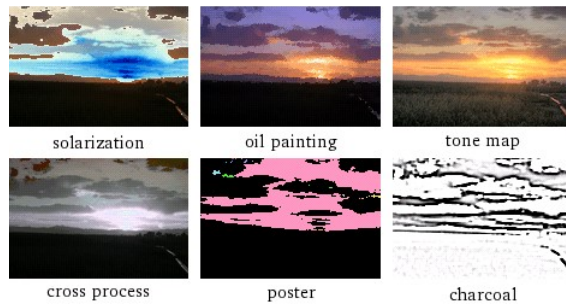
[More](#)



[Enable interactivity](#)

Image effects:

[More](#)



[Enable interactivity](#)

Download page

POWERED BY THE WOLFRAM LANGUAGE ([//WWW.WOLFRAM.COM/LANGUAGE/](http://WWW.WOLFRAM.COM/LANGUAGE/))

Primary source: Wolfram|Alpha Knowledgebase, 2016

External source:

**Note**

This list is intended as a guide to sources of further information. The inclusion of an item in this list does not necessarily mean that its content was used as the basis for any specific Wolfram|Alpha result.

Requests by researchers for detailed information on the sources for individual Wolfram|Alpha results can be directed here (). Requests will be handled on the basis of priority, importance and available resources.

[Financial data provided by **Morningstar** (<http://www.morningstar.com/>). Market quotes provided by **Xignite** (<http://www.xignite.com/>). More » ()]

To open this file you need the **FREE Wolfram CDF Player** or **Mathematica**

[Download Wolfram CDF Player \(http://wolfram.com/cdf-player/\)](http://wolfram.com/cdf-player/)

[Continue downloading file](#)

Related Queries:

- [image smoothing](#)
- [reflect along the diagonal](#)
- [find watershed components](#)
- [image entropy](#)
- [analyze](#)

Give us your feedback:

[Send](#)

[Pro \(//www.wolframalpha.com/pro/?src=footer\)](http://www.wolframalpha.com/pro/?src=footer) |

[Mobile Apps \(http://products.wolframalpha.com/mobile/\)](http://products.wolframalpha.com/mobile/) |

[Products \(http://products.wolframalpha.com/\)](http://products.wolframalpha.com/) |

[Business Solutions \(http://products.wolframalpha.com/business/\)](http://products.wolframalpha.com/business/) |

[For Developers \(http://products.wolframalpha.com/developers/\)](http://products.wolframalpha.com/developers/) |

[About \(//www.wolframalpha.com/about.html\)](http://www.wolframalpha.com/about.html)

[Resources & Tools \(//www.wolframalpha.com/resources/\)](http://www.wolframalpha.com/resources/) |

[Blog \(http://blog.wolfram.com/category/wolframalpha/\)](http://blog.wolfram.com/category/wolframalpha/) |

[Community \(http://community.wolframalpha.com/\)](http://community.wolframalpha.com/) |

[Contact \(//www.wolframalpha.com/contact.html\)](http://www.wolframalpha.com/contact.html) | Connect [f](#) [t](#) [r](#) [e](#) [l](#) [i](#) [n](#)

[\(//www.wolframalpha.com/social/\)](http://www.wolframalpha.com/social/)

©2016 Wolfram Alpha LLC |

[Terms](#)

[\(/www.wolframalpha.com/termsfuse.html\)](http://www.wolframalpha.com/termsfuse.html) |

[Privacy](#)

[\(/www.wolframalpha.com/privacypolicy.html\)](http://www.wolframalpha.com/privacypolicy.html)

 **WOLFRAM** (<http://www.wolfram.com>) [wolfram.com \(//www.wolfram.com/\)](http://www.wolfram.com/) | [Mathematica \(//www.wolfram.com/mathematica/\)](http://www.wolfram.com/mathematica/) |

[Wolfram Demonstrations \(//demonstrations.wolfram.com/\)](http://demonstrations.wolfram.com/) | [MathWorld \(//mathworld.wolfram.com/\)](http://mathworld.wolfram.com/) |

[Wolfram Language \(//www.wolfram.com/language\)](http://www.wolfram.com/language/) | [Wolfram for Education \(//www.wolfram.com/education\)](http://www.wolfram.com/education/)